

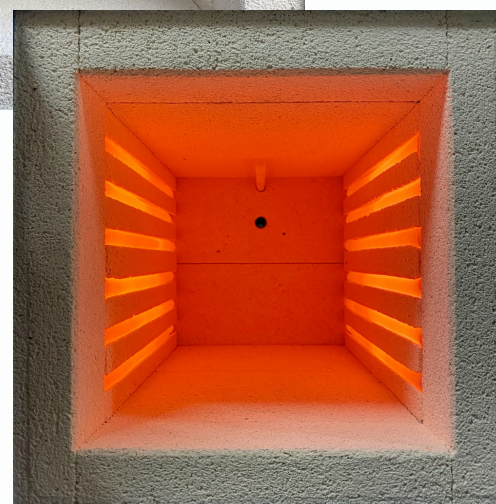


FURNACE FT SPECIAL



QUENCHING FURNACES

- Heat Treatment Sector -



QUENCHING FURNACE

Electric furnaces for heat treatments with oversized chambers, designed for tempering molds, axes, cleavers and much more.

They quickly reach the maximum temperature of 1100 degrees and maintain it with absolute precision and constant uniformity.

The ovens work silently thanks to a static unit and a latest generation digital thermoregulator and, on request, it is possible to apply a temperature programmer thanks to which customized work programs can be created.

They are also finely painted in various colors of your choice, have an innovative design and have a microswitch designed to protect the operator to ensure maximum safety.

Finally, it is possible to combine them with a support table made specifically and painted in the same color as the oven.



DATA SHEET



TECHNICAL DATA				
TYPE	SINGLE-PHASE VOLTAGE	FREQUENCY	WATTAGE	MAX TEMPERATURE
FT SPECIAL 300	230 V.	Hz. 50-60	4.2 kw	1100 C°
FT SPECIAL 400	230 V.	Hz. 50-60	5.2 kw	1100 C°

OVEN CHAMBER DIMENSIONS			
TYPE	DEPTH	WIDTH	HEIGHT
FT SPECIAL 300	300 mm	200 mm	200 mm
FT SPECIAL 400	400 mm	200 mm	200 mm

DIMENSIONS				
TYPE	DEPTH	WIDTH	HEIGHT	WEIGHT
FT SPECIAL 300	700 mm	500 mm	650 mm	70 kg
FT SPECIAL 400	700 mm	500 mm	650 mm	70 kg

FURNACE FT SPECIAL