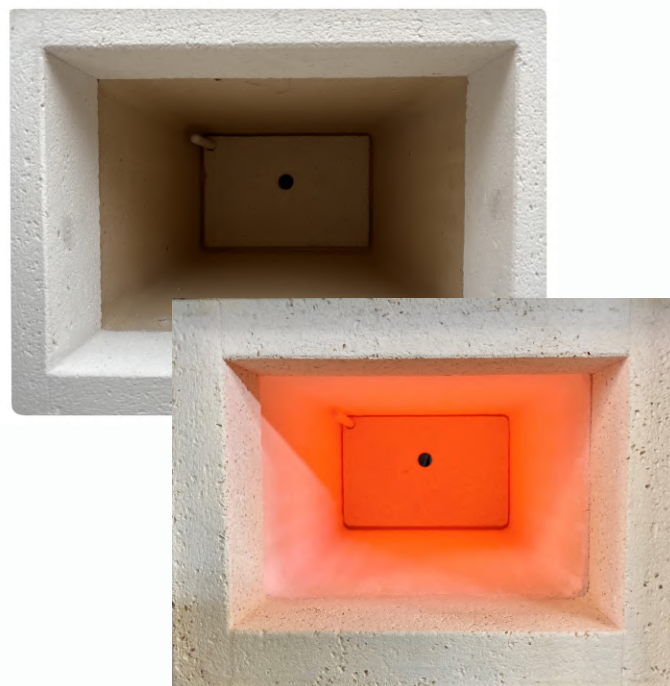


FURNACE ME



CYLINDER ANNEALING FURNACE

- Goldsmith Sector -



CYLINDER ANNEALING FURNACE

The ME electric muffle furnace is used in goldsmith workshops, specifically for annealing cylinders, noble metals and their alloys.

The ME oven is heated on four sides by a muffle complete with resistances to ensure maximum temperature uniformity.

It is also finely painted and has a microswitch to protect the operator.

The oven is complete with a digital thermoregulator, a static unit and, on request, a temperature programmer, daily or weekly timer, from which it is possible to set automatic switching on and off.

DATA SHEET

TECHNICAL DATA

TYPE	SINGLE-PHASE VOLTAGE	THREE-PHASE VOLTAGE	FREQUENCY	WATTAGE	MAX TEMPERATURE
ME-320	v. 230	v. 380	Hz. 50-60	3.5 kw	1000 C°

OVEN CHAMBER DIMENSIONS

TYPE	DEPTH	WIDTH	HEIGHT
ME-320	320 mm	210 mm	145 mm

DIMENSIONS

TYPE	DEPTH	WIDTH	HEIGHT	WEIGHT
ME-320	480 mm	420 mm	470 mm	85 kg

