

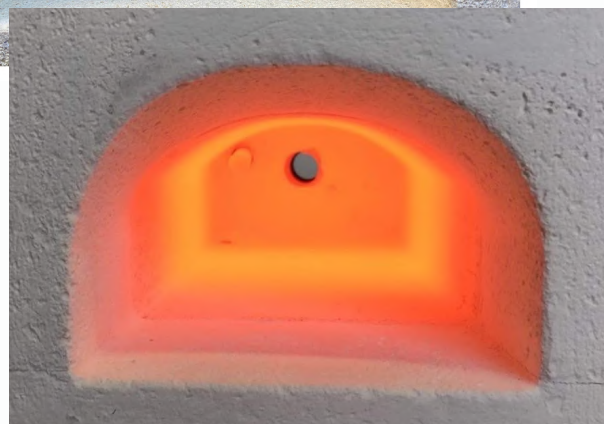


FURNACE MZ



LABORATORY FURNACES

- Laboratory Sector -



LABORATORY FURNACE

The MZ electric muffle furnace, of extremely reduced size and weight, is used in laboratories, specifically research, school, industrial and analysis laboratories.

The MZ oven is heated on four sides by a muffle complete with resistances to ensure maximum temperature uniformity.

It is also finely painted and complete with digital thermoregulator.



DATA SHEET

TECHNICAL DATA

| TYPE | SINGLE-PHASE VOLTAGE | FREQUENCY | WATTAGE | MAX TEMPERATURE |
|-----------|----------------------|-----------|---------|-----------------|
| MZ | v. 230 | Hz. 50-60 | 1.2 kw | 1100 C° |

OVEN CHAMBER DIMENSIONS

| TYPE | DEPTH | WIDTH | HEIGHT |
|-----------|--------|--------|--------|
| MZ | 200 mm | 100 mm | 65 mm |

DIMENSIONS

| TYPE | DEPTH | WIDTH | HEIGHT | WEIGHT |
|-----------|--------|--------|--------|--------|
| MZ | 480 mm | 420 mm | 470 mm | 25 kg |

