

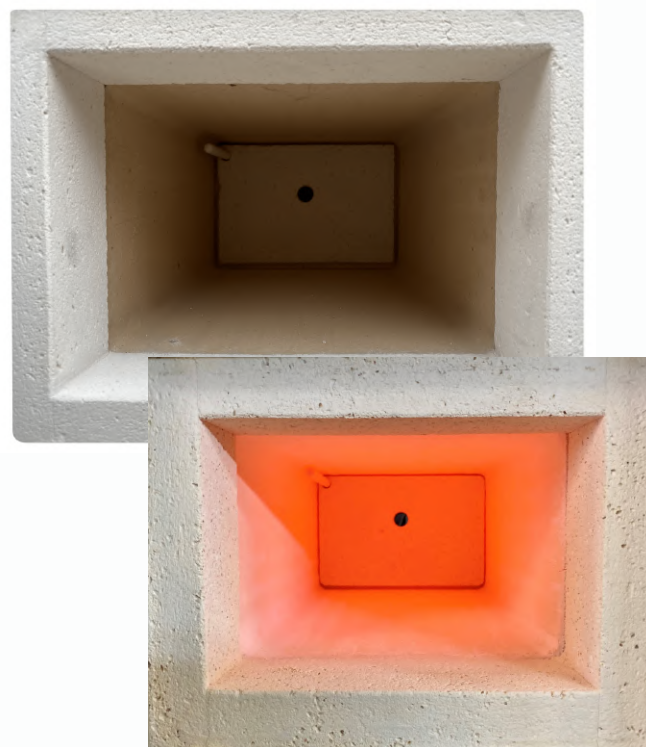


FURNACES ME



LABORATORY FURNACE

- *Laboratory Sector* -



LABORATORY FURNACE

ME electric muffle furnaces are used in laboratories, specifically research, school, industrial and analysis.

ME ovens are heated on four sides by a muffle complete with resistors to ensure maximum temperature uniformity. They are also finely painted and have a microswitch to protect the operator.

The ovens are complete with a digital thermoregulator, a static unit and, on request, a temperature programmer, daily or weekly timer, from which it is possible to set automatic switching on and off.



DATA SHEET

TECHNICAL DATA

TYPE	SINGLE-PHASE VOLTAGE	THREE-PHASE VOLTAGE	FREQUENCY	WATTAGE	MAX TEMPERATURE
ME 300	v. 230	-	Hz. 50-60	3 kw	1100 C°
ME 320	v.110 - v. 230	v. 380	Hz. 50-60	4 kw	1100 C°
ME 520	v. 230	v. 380	Hz. 50-60	6 kw	1100 C°
ME 640	-	v. 380	Hz. 50-60	8 kw	1100 C°

OVEN CHAMBER DIMENSIONS

TYPE	DEPTH	WIDTH	HEIGHT
ME 300	300 mm	145 mm	100 mm
ME 320	320 mm	210 mm	145 mm
ME 520	520 mm	210 mm	145 mm
ME 640	640 mm	210 mm	145 mm

DIMENSIONS

TYPE	DEPTH	WIDTH	HEIGHT	WEIGHT
ME 300	700 mm	500 mm	650 mm	85 kg
ME 320	700 mm	500 mm	650 mm	85 kg
ME 520	900 mm	500 mm	650 mm	100 kg
ME 640	1020 mm	500 mm	650 mm	120 kg

